

---

# *Skiff / Foiling Sprint Series*

# **Sailing Instructions**

10<sup>th</sup> August 2024

ORGANISING AUTHORITY

Sandy Bay Sailing Club



## **1 ORGANISING AUTHORITY**

1.1 Sandy Bay Sailing Club.

## **2 RULES**

2.1 The regatta will be governed by the rules as defined by the 2021-2024 World Sailing Racing Rules of Sailing (RRS), the Prescriptions and Special Regulations (Part 2) of Australian Sailing (AS).

2.2 Changes to rules can be found in appendix A and have been approved by SBSC Sailing committee.

## **3 CAMERAS AND ELECTRONIC EQUIPMENT**

3.1 Competitors may also use their own camera recording equipment.

## **4 CHANGES TO SAILING INSTRUCTIONS**

4.1 Any changes to sailing instructions will be communicated not less than one hour before the scheduled warning signal on the day it will take effect. Any change to the race schedule will be posted by 0845 on the day it will take effect.

## **5 SIGNALS MADE ASHORE**

5.1 Signals made ashore will be displayed on the 'box' flag pole.

5.2 Race signal AP is changed so that when AP is displayed ashore, '1 minute' is replaced with 'not less than 15 minutes after AP is lowered'.

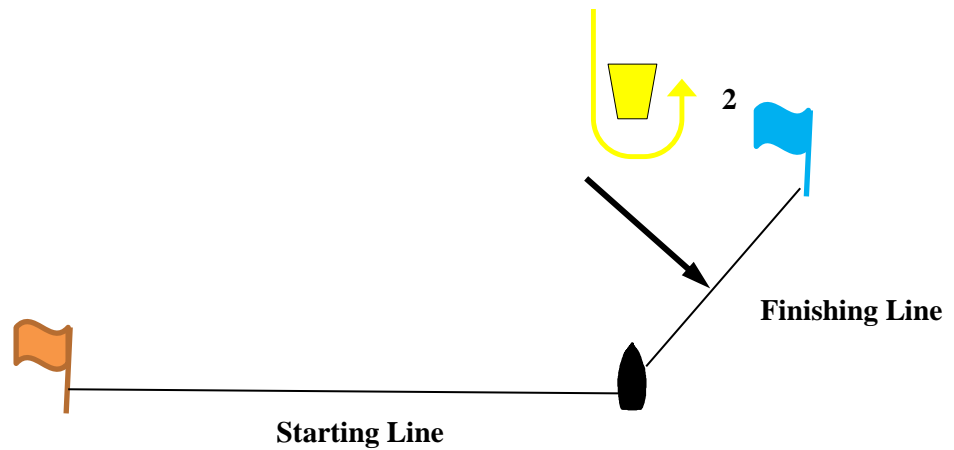
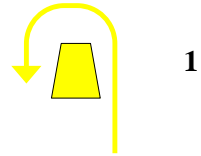
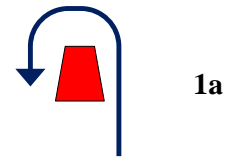
## **6 CLASS FLAGS**

6.1 The start flags for each class are as follows:

MOTH	Moth Class Flag
WASZP	Waszp Class Flag
IQ FOIL	Numeral Pennant 1
29er	29er Class Flag

6.2 It is the intention to start all classes together, this may be changed by discretion of the race officer.

## 7 THE COURSE



The diagram shows the course to be sailed, the order in which the marks are to be passed and the side on which each mark is left.

**MOTH - Start – 1a – 2 – 1a – 2 - Finish**

**WASZP / IQ - Start – 1 – 2 – 1 – 2 - Finish**

**29er - Start – 1 - 2 -Finish**

**Start - Mark 1 shall be approximately 550m.**

**Start - Mark 1a shall be approximately 700m.**

**This may be varied at the Race Officers discretion.**

## 8 MARKS

Mark 1a will be a red cylindrical inflatable buoy

Mark 1 will be a yellow triangle inflatable buoy.

Mark 2 will be a yellow triangle inflatable buoy.

## 9 THE START

9.1 All races will be started using RRS 26, modified as follows:

Signal	Flag and Sound	Minutes before Starting Signal
Warning	Class Flag – 1 Sound	3
Preparatory	P,U or Black – 1 Sound	2
One-minute	Prep Flag Lowered – 1 Sound	1
Starting	Class Flag Lowered – 1 Sound	0

9.2 To alert boats that a start sequence will shortly commence – multiple short sound signals will be made prior to the warning signal. The orange flag will be raised at this time.

9.3 The starting is between the staff displaying the orange flag on the signal vessel and orange flagged mark.

## 10 THE FINISH

10.1 The finishing line is between the staff displaying an orange flag on the signal vessel and a white chequered flagged mark.

10.2 If a boat is asked by an official vessel, it shall return to the starting area. That boat will be scored in its last known position.

## 11 TIME LIMITS

11.1 Target Time will be 8-10 minutes

11.2 Time limit will be 15 minutes for the first boat.

11.3 Finishing window will be 5 minutes after the first boat of their class. The race committee may change this at their discretion by flying code flag “L” before the race it will take effect and verbally communicating the new time.

11.4 A boat finishing outside the finishing window will be scored in its last known position.

## 12 SIGN ON – SIGN OFF

12.1 All boats shall sign on prior to their start at the signal vessel. A boat shall then sign off via indicating to a race committee vessel they are heading back to shore.

### **13 PROTEST AND REQUESTS FOR REDRESS**

- 13.1 The protest time limit shall be posted on the online notice board. The time limit for all protests is 30 minutes after the last boat of each fleet has finished the last race of the day or the race committee signals no more racing today, whichever is later.
- 13.2 Notices will be posted within 15 minutes of the protest time limit to inform competitors of hearings in which they are parties or named as witnesses. Hearing locations will be advised when hearing details are posted. Hearings may start before the scheduled time with the agreement of all parties.

### **14 PRIZES**

- 14.1 First Place overall in each class
- 14.2 Most memorable moment (as voted by race committee and spectators). If applicable.

### **15 SAFETY**

- 15.1 All Competitors competing in a foiling class shall wear an approved helmet (EN1385 or EN1077 or equivalent).
- 15.2 It is encouraged that all competitors carry a knife and whistle.

### **16 EVENT CANCELLATION / POSTPONEMENT**

- 16.1 In the event that the event needs to be cancelled, or the conditions are not fair to sail for all classes, the organising authority may advise to postpone the event to another date.
- 16.2 In the instance that the event is postponed, entry fees may be held until the new date, or refunded on the request of competitors.
- 16.3 New dates for a future event will be communicated via competitor emails, as per the entry form.

### **17 SCHEDULE**

17.1

	<b>Time</b>
<b>Competitors Briefing</b>	0830hrs at SBSC
<b>First Warning Signal</b>	0930 hrs (No warning signal to be made after 1200hrs)
<b>Presentation</b>	As soon as applicable after final race of the day

## APPENDIX A – Modified Rules

1	<p>Definition Keep Clear is replaced with:</p> <p><b>Keep Clear</b> A boat keeps clear of a right-of-way boat</p> <p>(a) if the right-of-way boat can sail her course with no need to take avoiding action and,</p> <p>(b) if the right-of-way boat can also change course in both directions without immediately making contact.</p>
2	<p>Definition Mark-room is replaced with:</p> <p><b>Mark-room</b> - Room for a boat to sail her proper course to round or pass the mark, and room to pass a finishing mark after finishing.</p>
3	<p>Definition Zone replaced with (<b>for foiling classes only</b>):</p> <p><b>Zone</b> The area around marks, obstructions or the boundary within a distance of ten hull lengths. A boat is in the zone when any part of her hull is in the zone.</p>
4	<p>Delete rule 13 (<b>for foiling classes only</b>) and replace with:</p> <p><b>13 Deleted</b></p>
5	<p>Delete rule 14 and replace with:</p> <p><b>14 AVOIDING CONTACT</b> If reasonably possible a boat shall</p> <p>(a) avoid contact with another boat,</p> <p>(b) not cause contact between boats, and</p> <p>(c) not cause contact between a boat and an object that should be avoided.</p> <p>However, a right-of-way boat, or one sailing within the room or mark-room to which she is entitled, need not act to avoid contact until it is clear that the other boat is not keeping clear or giving room or mark-room.</p>
6	<p>Delete rule 17 and replace with:</p> <p><b>17 Deleted</b></p>
7	<p>Delete rule 18 and replace with:</p> <p><b>18 MARK-ROOM</b></p> <p><b>18.1 When Rule 18 Applies</b></p> <p>(a) Rule 18 applies between boats when they are required to leave a mark on the same side and at least one of them is in the zone. However, it does not apply between a boat approaching a mark and one leaving it.</p> <p>(b) Rule 18 no longer applies between boats when the boat entitled to mark-room:</p> <p>(1) leaves the zone; or</p> <p>(2) is on the next leg and the mark is astern of her.</p> <p><b>18.2 Giving Mark-Room</b></p> <p>(a) When rule 18 first applies,</p>

	<p>(1) if boats are overlapped the outside boat at that moment shall thereafter give the inside boat mark-room.</p> <p>(2) if boats are not overlapped, the boat that has not reached the zone shall thereafter give mark-room.</p> <p>(b) When rule 18 no longer applies and is required to be applied again, the relationship of the boats considered at the time rule 18.2(a) is reapplied.</p> <p>(c) If a boat obtained an inside overlap and, from the time the overlap began, the outside boat has been unable to give mark-room, she is not required to give it.</p> <p><b>18.3 Tacking or Gybing</b></p> <p>(a) If mark-room for a boat includes a change of tack, such tack or gybe shall be done no faster than a tack or gybe to sail her proper course.</p> <p>(b) Other than at a gate mark or a finishing mark when an inside overlapped right-of-way boat must tack or gybe at a mark to sail her proper course, until she tacks or gybes she shall sail no farther from the mark than needed to sail that course. Rule 18.3(b) does not apply at a gate mark or a finishing mark and a boat shall be exonerated for breaking this rule if the course of another boat was not affected before the boat changed tack.</p>
8	<p>Delete rule 21 and replace with:</p> <p><b>21 DELETED</b></p>
9	<p>Delete rule 42 (<b>for foiling classes only</b>) and replace with:</p> <p><b>42 PROPULSION</b></p> <p><b>42.1</b> The following action is prohibited:</p> <p>(a) sculling: repeated movement of the helm that is either forceful or that propels the boat forward or prevents her from moving astern.</p> <p><b>42.2 Exceptions</b></p> <p>(a) Any means of propulsion may be used to help a person or another vessel in danger.</p>

## APPENDIX B – Course Area

Map below shows approximate course area. Course will be located as close to spectator viewing positions as practicably possible

